

Price-list 2020



# ZONING

The Smart decisions leads to happiness

## Control panels, thermostats, interfaces and sensors

### Control panels



**ZITY-RC** 2-6 zones radio controlled control panel.  
**ZITY-W** 2-6 zones wired control panel.

#### Zone expansion modules

**ZITY-W/ME 7-12** Expansion module from 7 to 12 zones.  
**ZITY-W/ME 13-18** Expansion modules from 13 to 18 zones.

#### Control panel for combined installations

**ZITY-RC/MC** Wireless control panel for combined installations.  
**ZITY-W/MC** Wired control panel for combined installations.

#### SLAVE control panels for centralized mode (heating/cooling) installations

**ZITY-RC/S** Wireless control panel SLAVE configuration.  
**ZITY-W/S** Wired control panel SLAVE configuration.

	eur
ZITY-RC	272,06
ZITY-W	228,95
ZITY-W/ME 7-12	228,95
ZITY-W/ME 13-18	228,95
ZITY-RC/MC	272,06
ZITY-W/MC	228,95
ZITY-RC/S	272,06
ZITY-W/S	228,95

### Chrono-thermostats



**ZEBRA-B**



**ZOE-RC**

**ZEBRA-B** Wired Master/slave chrono-thermostat.  
**ZOE-RC** Radio controlled Master / Slave Crono-thermostat.

(\* The wireless ZOE-RC and the wired ZEBRA thermostats can not be combined in the same ZITY control panel.

	eur
ZEBRA-B	96,71
ZOE-RC	120,94

### Communication interfaces

Check availability in [www.zoning.eu](http://www.zoning.eu)



**DAIKIBOX** For DAIKIN units.  
**MITBOX** For Mitsubishi Electric units.  
**FUJIBOX** For General-Fujitsu, Hiyasu and Fuji-electric units.  
**HEAVYBOX** For Mitsubishi Heavy Industries units.  
**PANABOX** For Panasonic commercial units.  
**PANABOX-DOMESTIC** For Panasonic residential units.  
**TOSHIBOX** For Toshiba units.  
**LGBOX** For LG units.  
**HITABOX** For Hitachi commercial units.  
**SAMBOX** For Samsung, except NASA units.  
**NASABOX** For Samsung NASA units.  
**MUNDOBOX** For Mundoclima units.  
**KAYBOX** For Kaysun units.  
**MIDEABOX** For Midea units.  
**CARBOX** For Carrier units.  
**MULTIBOX** For con units with XYE.

...BOX	eur
...BOX	242,06

### CLOUD communication interfaces



**NetBox** Cloud communication interface.

...BOX	eur
...BOX	299,88

### NTC Temperature sensor

**NTC 10K** temperature sensor to use in installations without AHU interface, fan-coil or radiant water systems.

NTC 10K	eur
NTC 10K	5,97



technical info at [www.zoning.eu](http://www.zoning.eu)

## Volume control and by-pass dampers

### Duct motorised dampers



**ZC** Motorised volume damper (24 Vdc) for circular duct, suitable to control the air volume in ZONING installations.

**ZQ** Motorised volume damper (24 Vdc) for rectangular duct, suitable to control the air volume in ZONING installations.

.../AIS/ External isolation layer 5 mm for ZC dampers (supplement 15%)

Diam. mm	ZC eur	Q Min-Max m3/h
100	75,69	100 - 170
125	76,96	170 - 270
150	78,05	254 - 380
160	78,25	280 - 440
200	79,5	450 - 680
250	80,79	700 - 1100
315	83,34	1100 - 1680

L x H mm	ZQ eur	Q Min-Max m3/h
200x100	103,36	250 - 440
300x100	108,90	430 - 650
400x100	113,49	570 - 870
500x100	118,09	720 - 1100
600x100	122,70	850 - 1300
200x150	110,48	430 - 640
300x150	115,99	640 - 970
400x150	121,10	860 - 1295
500x150	126,15	1080 - 1600
600x150	131,24	1295 - 1940
200x200	117,62	570 - 870
300x200	123,13	860 - 1300
400x200	128,69	1150 - 1750
500x200	134,26	1440 - 2200
600x200	139,80	1700 - 2600
800x200	150,90	2300 - 3500

### Electronic pressure control



**KBY** Pressure control Module (range 50 to 300 Pa). Calibration of pressure by turning a knob. Possible action on the actuators of ZQ or ZC dampers or directly with a 0-10V output to the EC type fans.

	eur
KBY	129,87

### By-pass dampers



**ZK** Pressure damper for circular duct mounting.

**ZG** Pressure damper for rectangular duct mounting.

**ZS** Pressure damper for wall mounting by means of visible screws.

Diam mm	ZK eur	Q Min-Max m3/h
200	34,24	750 - 1000
250	33,79	1250 - 1500
315	37,05	1750 - 2000
355	39,62	2000 - 2500

L x H mm	ZG eur	Q internal unit m3/h
400x100	38,30	650 - 750
300x150	41,63	850 - 1000
400x150	44,90	1000 - 1250
500x150	42,97	1200 - 1500
400x200	46,35	1500 - 1750
450x200	44,30	1700 - 2000
600x200	47,74	2100 - 2500
500x250	49,15	2500 - 3000
600x250	50,57	3000 - 3500
600x300	52,64	3400 - 4000
2 un 500x200	54,10	3800 - 4500
2 un 600x200	95,45	4200 - 5000
2 un 500x250	102,30	4700 - 5500
2 un 600x250	98,31	5100 - 6000

L x H mm	ZS eur	Q internal unit m3/h
400x100	28,52	650 - 750
300x150	27,96	850 - 1000
400x150	28,61	1000 - 1250
500x150	30,22	1200 - 1500
400x200	29,29	1500 - 1750
450x200	30,40	1700 - 2000
600x200	32,21	2100 - 2500
500x250	31,92	2500 - 3000
600x250	33,30	3000 - 3500
600x300	34,44	3400 - 4000
2 un 500x200	62,01	3800 - 4500
2 un 600x200	64,41	4200 - 5000
2 un 500x250	63,86	4700 - 5500
2 un 600x250	66,53	5100 - 6000



technical info at  
[www.zoning.eu](http://www.zoning.eu)

## Motorised damper for grilles



Z

technical info at  
[www.zoning.eu](http://www.zoning.eu)

### Description

Supply grilles with motorized damper (24 Vdc) to install in a ZONING system.

**AMT-AN** Single deflection grille.

**CTM-AN** Double deflection grille.

**LMT** Linear grille.

**LMT-DD** Linear grille with double deflection.

### Accessories

**ZP-AZ** Motorised damper (24 Vdc) for grilles

**CM** Mounting frame from galvanised steel.

(Supplied in 4 stringers to mount on site)

### Fixing

**(S)** Clips. It requires mounting frame CM.

**(T)** Visible screws.

### Finishes

**AA** Matt silver anodised.

**M9016** Painted in white similar to RAL 9016.

**RAL...** Painted in other RAL colours :To consult.

L x H	AMT-AN	CTM-AN	Q	Q	LMT	LMT-DD	Q	Q	ZP-AZ	CM
mm	eur	eur	Min	Max	eur	eur	Min	Max	eur	eur
			m3/h	m3/h			m3/h	m3/h		
200x100	8,45	13,03	110	180	13,34	17,87	70	120	76,54	1,94
250x100	9,34	14,68	140	220	14,36	19,62	90	150	76,79	2,10
300x100	10,30	16,61	160	270	15,49	21,87	110	190	77,05	2,22
350x100	12,13	19,19	190	320	17,42	25,33	-	-	77,33	2,32
400x100	12,50	20,21	230	370	17,42	25,33	150	250	77,58	2,45
450x100	14,58	22,70	250	410	19,39	28,84	-	-	77,87	2,57
500x100	14,99	23,60	270	450	19,39	28,84	190	320	78,11	2,65
600x100	18,46	29,36	330	540	23,93	35,40	240	390	78,65	3,02
200x150	10,36	15,76	170	280	16,29	21,70	120	210	78,67	2,06
250x150	11,02	17,12	210	350	17,67	23,96	160	260	79,07	2,18
300x150	12,15	19,41	260	420	19,16	26,81	200	340	79,40	2,32
350x150	14,28	22,67	300	490	21,81	31,4	-	-	79,88	2,41
400x150	14,73	23,98	330	540	21,81	31,40	260	440	80,31	2,55
450x150	17,20	27,02	390	640	24,54	36,09	-	-	80,72	2,65
500x150	17,53	28,34	440	700	24,54	36,09	340	550	81,16	2,77
600x150	20,94	33,35	540	870	30,76	44,79	410	670	81,99	3,12
200x200	12,56	18,42	230	380	19,19	25,47	170	280	80,80	2,16
250x200	13,97	20,93	290	480	20,97	28,31	220	370	81,36	2,30
300x200	15,36	23,80	360	580	23,08	32,00	370	450	81,91	2,43
350x200	17,54	27,07	420	680	26,43	37,72	-	-	82,50	2,52
400x200	18,23	28,73	480	780	26,43	37,72	360	600	83,07	2,65
450x200	21,20	32,44	540	880	29,92	43,56	-	-	83,63	2,79
500x200	21,81	33,81	610	980	29,92	43,56	460	760	84,18	2,90
600x200	25,40	39,69	730	1190	37,66	54,25	560	910	84,76	3,23
250x250	15,83	23,66	370	610	24,58	32,96	270	450	83,62	2,43
300x250	17,50	26,90	450	740	26,86	37,06	340	570	84,33	2,57
400x250	21,41	33,93	500	810	31,18	44,17	460	760	85,80	2,82
500x250	26,30	40,78	770	1240	36,16	51,99	580	950	87,21	3,02
600x250	30,32	47,66	930	1500	45,57	64,78	700	1150	88,64	3,37

### Accessories

#### Antenna 433/434 Mhz



**ANTENA** Antenna for radio reception 433/434 Mhz, suitable for ZITY control panels.

ANTENA

eur  
35,23

#### Electrical enclosure



**CIP** Insulating IP40 modular box with incorporated DIN rail. Allows to protect the control panels from dust and humidity in aggressive atmospheres.

CIP

eur  
58,99

#### Antenna extender

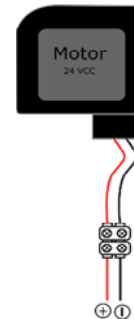


**Antenna extender** 5 m extender for Zoning system antennas.

ANTENNA EXTENDER

eur  
46,33

#### Spare part motors



**ZC MOTOR** For motorised circular dampers ZC.  
**ZQ MOTOR** For motorised rectangular dampers ZQ.

ZC Motor  
ZQ Motor

eur  
59,63  
56,73

#### Wind cable



**CA** Wind of 100 m of cable (red/ black 2 x 0,75) for the actuators connection.

**CAB** Wind of 100 m of shield cable (4 x 0,5) for ZEBRA thermostats.

CA  
CAB

eur  
59,63  
155,20



technical info at  
[www.zoning.eu](http://www.zoning.eu)

## Zoning Plug & Play



### Description

ZmartBox consists of a kit of Zoning (control panel+thermostats communication interface) and a splitter plenum box (2 to 6 powered outputs +by pass if applicable) compatible with most indoor air conditioning ducted type unit. The Zmartbox set comes fully wired, configured and ready to be installed on site.

**ZmartBox /DX** Kit for direct expansion units. Communication interface with the unit included.

**ZmartBox /FC** For Fan-coil installations. NTC sensor included for water temperature control

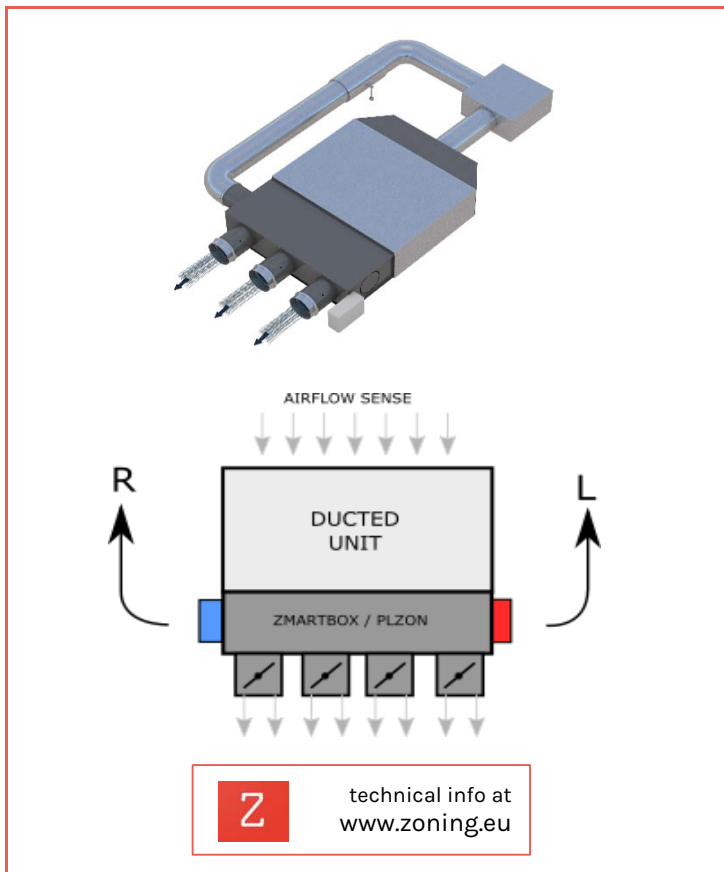
**.../RC** Radio-control Kit: ZITY-RC control panel + ZOE-RC thermostats.

**.../W** Wired kit: ZITY-W control panel + ZEBRA-B wired thermostats

**.../KBY** Electronic pressure control kit: KBY module + motorized damper ZC or ZQ.

**PLZON** Plenum for ducted AHU for motorised and by pass dampers

**PLMAC** Plenum wit circular spigots for ducted AHU



Diam 160	2 zones eur	3 zones eur	4 zones eur	5 zones eur	6 zones eur
ZmartBox/DX/RC	1.305,05	1.517,08	1.730,54	1.942,58	2.156,04
ZmartBox/DX/W	1.211,86	1.398,85	1.587,27	1.774,27	1.962,69
ZmartBox/FC/RC	1.062,99	1.275,02	1.488,48	1.700,52	1.913,98
ZmartBox/FC/W	969,80	1.156,80	1.345,22	1.532,22	1.720,64
.../KBY	204,18	204,18	204,18	204,18	204,18
PLMAC	164,19	175,09	186,00	196,89	207,78
PLZON	436,27	518,29	600,30	682,34	764,35

Diam 200	2 zones eur	3 zones eur	4 zones eur	5 zones eur	6 zones eur
ZmartBox/DX/RC	1.329,25	1.552,55	1.778,69	2.001,99	2.228,13
ZmartBox/DX/W	1.236,07	1.434,32	1.635,43	1.833,68	2.034,79
ZmartBox/FC/RC	1.087,20	1.310,49	1.536,64	1.759,93	1.986,08
ZmartBox/FC/W	994,01	1.192,26	1.393,37	1.591,62	1.792,73
.../KBY	204,18	204,18	204,18	204,18	204,18
PLMAC	198,90	211,07	223,25	235,43	286,61
PLZON	461,08	554,64	649,66	743,22	838,25

Supplement for special execution (SP) + 129,34 €

### How to order

ZmartBox 1 / 2 / 3 / 4 / 5 / 6 / 7 / 8

PLMAC 3 / 4 / 7

PLZON 3 / 4 / 5 / 6 / 7

- Unit type:** DX: Direct Expansion FC: Fan-coil
- Communication:** RC: Radio Control W: Wired
- Number of zones**
- Diameter of the motorised damper**
- By-pass type** ZK: Circular ZS: Rectangular ZC: Circular motor ZQ: Rectangular motor
- By-pass location** L: Left R: Right
- Unit:** Brand and model of the indoor unit
- ST/SP:** Standard or special



## Selection table

ZMARTBOX / PLZON / PLMAC are compatible with any concealed ducted unit. The next table shows the most common units. For any other brand/model please consult.

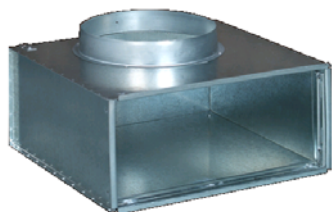
**ST** Standard models.

**ST (1)** Standard model but with airflow problem. The ducted unit supplies more airflow than the advised for the motorised dampers.

**SP** Special models. The PLZON plenum box is bigger than the ducted unit. It requires an adapter. Apply the supplement SP for the price.

MARCA	MODELO	N. zonas D150/160					N. zonas D200				
		2 z	3 z	4 z	5 z	6 z	2 z	3 z	4 z	5 z	6 z
FUJITSU GENERAL	AR*G 12/14 LLTB	ST	ST	SP	SP	SP	SP	SP	SP	SP	SP
	AR*G 18 LLTB	ST	ST	ST	SP	SP	SP	SP	SP	SP	SP
	AR*G 24 LML	ST	ST	ST	ST	SP	ST	ST	ST	SP	SP
	AR*G 30/36/45 LML	ST (1)	ST (1)	ST	ST	SP	ST	ST	ST	SP	SP
DAIKIN	FBQ/ FBA 50 D	ST	ST	SP	SP	SP	ST	SP	SP	SP	SP
	FBQ/ FBA 60/71D	ST	ST	ST	ST	SP	ST	ST	ST	SP	SP
	FBQ/ FBA 100D	ST (1)	ST (1)	ST	ST	SY	ST	ST	ST	ST	SP
MITSUBISHI ELECTRIC	SEZ -KD 35/50 VA(L)	ST	ST	ST	SP	SP	SP	SP	SP	SP	SP
	SED-KD 60/71 VA(L)	ST	ST	ST	ST	SP	SP	SP	SP	SP	SP
	PEAD-RP 35/50 JA (Q)	ST	ST	ST	SP	SP	ST	ST	SP	SP	SP
	PEAD-RP 60 JA (Q)	ST	ST	ST	SP	SP	ST	ST	ST	SP	SP
	PEAD-RP 70 JA (Q)	ST (1)	ST (1)	ST	ST	SP	ST	ST	ST	SP	SP
	PEAD-RP 100JA (Q)	ST (1)	ST (1)	ST	ST	ST	ST	ST	ST	ST	SP
MITSUBISHI HEAVY INDUSTRIES	FDUM 50 VF	ST	ST	SP	SP	SP	ST	ST	SP	SP	SP
	FDUM 60 VF	ST	ST	ST	SP	SP	ST	ST	ST	SP	SP
	FDUM 70 VF	ST (1)	ST (1)	ST	SP	SP	ST	ST	ST	SP	SP
	FDUM100 VF	ST (1)	ST (1)	ST	ST	ST	ST	ST	ST	ST	SP
LGe	CB 18	ST	ST	ST	ST	SP	ST	ST	ST	ST	SP
	UB 21/24	ST (1)	ST (1)	ST	ST	SP	ST	ST	ST	ST	SP
	UB 36	ST (1)	ST (1)	ST	ST	ST	ST	ST	ST	ST	SP
	CM 18	ST	ST	ST	SP	SP	ST	ST	SP	SP	SP
	UM 24	ST	ST	ST	SP	SP	ST	ST	SP	SP	SP
	UM 30	ST (1)	ST (1)	ST	SP	SP	ST	ST	SP	SP	SP
	UM 36	ST (1)	ST (1)	ST	ST	ST	ST	ST	ST	ST	SP
PANASONIC	PF 36-50	ST	ST	ST	SP	SP	ST	ST	SP	SP	SP
	PF 60	ST	ST	ST	ST	SP	ST	ST	ST	SP	SP
	PF 71	ST	ST	ST	ST	SP	ST	ST	ST	SP	SP
	PF100	ST (1)	ST (1)	ST	ST	ST	ST	ST	ST	ST	SP
	PF 125	ST (1)	ST (1)	ST	ST	ST	ST (1)	ST (1)	ST	ST	SP
	PN(Y) 36-50	ST	ST	ST	SP	SP	ST	ST	SP	SP	SP
	PN(Y)60	ST	ST	ST	ST	SP	ST	ST	ST	SP	SP
	PN(Y) 71	ST (1)	ST (1)	ST	ST	SP	ST	ST	ST	SP	SP
	PN(Y) 100	ST (1)	ST (1)	ST	ST	ST	ST (1)	ST (1)	ST	ST	SP
PN(Y)125	ST (1)	ST (1)	ST	ST	ST	ST (1)	ST (1)	ST	ST	SP	
TOSHIBA	RAV 566 BTE	ST	ST	SP	SP	SP	ST	ST	SP	SP	SP
	BTE 806	ST	ST	ST	ST	SP	ST	ST	ST	SP	SP
	BTE 1106	ST (1)	ST (1)	ST	ST	ST	ST (1)	ST (1)	ST	ST	ST
HITACHI	RPI 2 FSN4E	ST	ST	ST	ST	SP	ST	ST	SP	SP	SP
	RPI 2,5 FSN4E	ST	ST	ST	ST	SP	ST	ST	ST	SP	SP
	RPI3 FSN4E	ST (1)	ST	ST	ST	SP	ST	ST	ST	SP	SP
	RPI4 FSN4E	ST (1)	ST	ST	ST	ST	ST	ST	ST	ST	ST
	RPI5 FSN4E	ST (1)	ST (1)	ST	ST	ST	ST (1)	ST	ST	ST	ST

## plenum boxes for grilles



### Description

Plenum boxes with circular connection, made from galvanized steel.

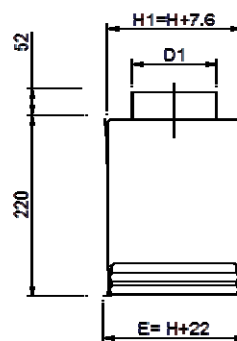
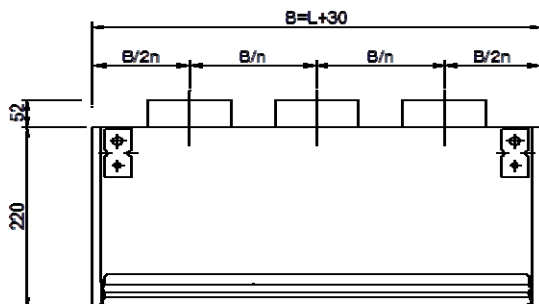
**PLAZ** Upper connection plenum box H = 220 mm.

Suitable for grilles with fixing by clips (S) and hidden screw (O)  
Suitable for wall and ceiling mounting.

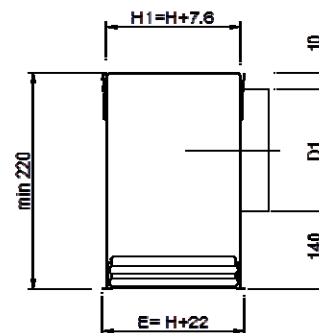
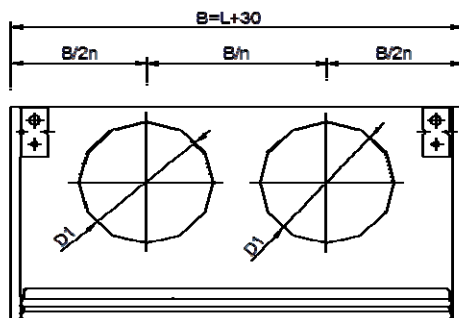
.../L/ Plenum box of lateral connection.

.../AIS/ Internal thermoacoustic insulation (35% supplement)

PLAZ



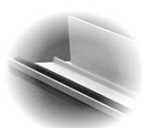
PLAZ/L/



L x H mm	PLAZ eur	Vfree= Vk/3 un / diam.	L x H mm	PLAZ / L/ eur	Vfree= Vk/3 un / diam.
200x100	34,72	1/98	200x100	34,72	1/123
250x100	36,09	1/98	250x100	36,09	1/123
300x100	38,60	1/98	300x100	38,60	1/158
350x100	39,65	1/98	350x100	39,65	1/158
400x100	41,12	1/98	400x100	41,12	1/158
450x100	43,15	1/98	450x100	43,15	1/198
500x100	44,46	1/98	500x100	44,46	1/198
600x100	47,33	2/98	600x100	47,33	1/198
200x150	36,75	1/123	200x150	36,75	1/158
250x150	39,37	1/123	250x150	39,37	1/198
300x150	41,01	1/123	300x150	41,01	1/198
350x150	42,15	1/123	350x150	42,15	1/198
400x150	43,74	1/123	400x150	43,74	1/198
450x150	45,15	1/123	450x150	45,15	1/198
500x150	46,52	1/123	500x150	46,52	1/198
600x150	50,52	2/123	600x150	50,52	2/198
200x200	39,34	1/198	200x200	39,34	1/198
250x200	40,90	1/198	250x200	40,90	1/198
300x200	42,57	1/198	300x200	42,57	1/198
350x200	45,49	1/198	350x200	45,49	1/198
400x200	47,15	1/198	400x200	47,15	1/248
450x200	48,68	1/198	450x200	48,68	1/248
500x200	50,20	1/198	500x200	50,20	1/248
600x200	53,45	1/198	600x200	53,45	1/248
250x250	43,02	1/198	250x250	43,02	1/198
300x250	44,76	1/248	300x250	44,76	1/198
400x250	49,57	1/248	400x250	49,57	1/248
500x250	52,72	1/248	500x250	52,72	1/248
600x250	56,06	1/248	600x250	56,06	1/248



## fixed blades return grilles



### Description

Air return grilles with fixed blades at 45° constructed from aluminium.

**DMT-AR** Grille with blades parallels to the largest side.

**EMT-AR** Grille with blades parallels to the shortest side.

### Accessories

**SP** Opposed blades volume damper from electro-zinc steel, in black colour.

**PFT** Filter box constructed from galvanised steel with filter K/8 class EN 779 G3.

**CM** Mounting frame from galvanised steel.  
(Supplied in 4 stringers to mount on site)

### Fixing

**(S)** Clips. It requires mounting frame CM.

**(O)** Hidden screw. It requires mounting frame CM  
(supplement **2,65 €**)

### Finishes

**AA** Matt silver anodised.

**M9016** Painted in white similar to RAL 9016.

**RAL...** Painted in other RAL colours :To consult.

L x H mm	DMT-AR	EMT-AR	SP	PFT	CM	Q Min	Q Max
	eur	eur	eur	eur	eur	m3/h	m3/h
200x100	9,46	10,64	5,90	9,76	1,94	55-120	160
300x100	11,53	13,65	7,92	10,13	2,22	80-185	230
350x100	12,97	14,93	9,05	10,33	2,32	90-200	260
400x100	13,92	16,56	9,95	10,54	2,47	110-230	310
500x100	16,03	20,18	11,96	10,95	2,65	140-300	390
200x150	11,56	12,19	6,45	10,14	2,05	85-175	230
300x150	13,72	15,79	8,68	10,71	2,32	130-270	360
400x150	16,09	19,25	10,64	11,25	2,55	170-360	475
500x150	18,69	23,46	12,81	11,81	2,77	225-455	605
300x200	16,35	17,95	9,29	11,25	2,44	175-365	490
350x200	18,69	19,90	10,31	11,63	2,53	210-430	580
400x200	19,39	22,12	11,35	12,01	2,65	235-500	660
500x200	22,68	27,06	13,67	12,64	2,90	300-620	830
600x200	29,17	30,78	15,83	13,36	3,23	360-750	1010
400x300	26,52	27,63	13,01	13,36	2,96	360-760	1010
500x300	31,73	34,38	15,73	14,39	3,17	460-960	1275
600x300	39,12	39,35	18,18	15,39	3,52	560-1160	1540

## accessible fixed blades return grilles



### Description

Air return grilles with fixed blades at 45°, with hinged removable core without tools, by pressing on the invisible PUSH fasteners. KLIN system allows for the easy access to the grille that conforms with the regulations required for maintenance of HVAC installations. Constructed from aluminium.

**DMT-KLIN** Air return grille with fixed blades.

### Accessories

**PFT** Filter type K/8 class EN 779 G3.

**PLK** Plenum box with an upper connection.

**...-R** Air flow damper in the spigot.

**.../L/** Lateral connection.

**.../AIS/** Thermo-acoustical insulation (supplement 35%)

### Fixing

1) Support brackets to hang from the ceiling.

### Finishes

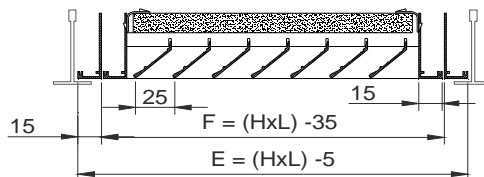
**M9016** Painted in white similar to RAL 9016.

**R9010** Painted in white RAL 9010.

**RAL...** Painted in other RAL colours :To consult.

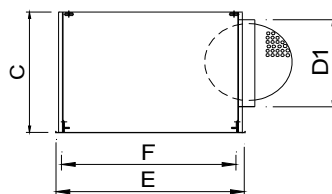


### DMT-KLIN / DMT-KLIN+PFT

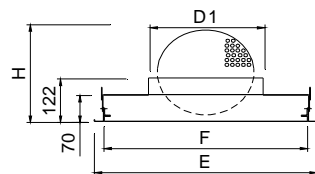


L x H	E	F
600 x 300	595 x 295	565 x 265
625 x 313	620 x 308	605 x 278
675 x 338	670 x 330	640 x 300
600 x 600	595 x 595	565 x 565
625 x 625	620 x 620	605 x 605
675 x 675	670 x 670	640 x 640

### PLK/L/...-R



### PLK...-R

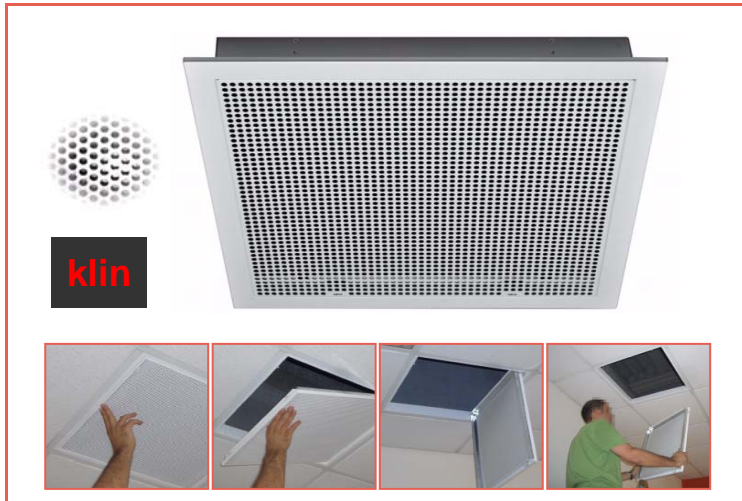


H ÷ L (nominal)	E	F	D1	H	C
600 x 300	595 x 295	565 x 265	198	353	320
625 x 313	620 x 308	605 x 278	198	353	320
675 X 338	670 x 333	640 x 303	198	353	320
600 X 600	595 x 595	565 x 565	313	353	435
625 X 625	620 x 620	590 x 590	313	353	435
675 X 675	670 x 670	640 x 640	313	353	435

L x H mm	DMT-KLIN eur	Lwa1< 35 dB(A) m3/h	Lwa1< 45 dB(A) m3/h	DMT-KLIN+PLK eur	Lwa1< 35 dB(A) m3/h	Lwa1< 45 dB(A) m3/h
600x600	82,91	1100-2300	3145	122,53	2370	3160
625x625	88,39	1200-2500	3400	128,68	2465	3290
675x675	100,36	1400-2900	3900	142,97	2665	3550
600x300	55,94	560-1150	1500	89,62	560	1500
625x313	59,19	620-1250	1700	94,32	620	1565
675x338	66,36	700-1450	1900	102,45	700	1685

L x H mm	PLK eur	PLK-R eur	PLK/L/ eur	PLK/L/-R eur	PFT eur
600x600	39,62	54,80	53,87	67,08	21,56
625x625	40,29	55,50	54,81	68,06	23,39
675x675	42,61	55,83	57,40	70,61	27,09
600x300	33,68	46,88	48,66	61,87	15,39
625x313	35,13	48,35	50,13	63,22	16,72
675x338	36,09	49,30	51,58	64,69	19,50

## air return accessible perforated face diffusers



### Description

Square perforated face diffusers to be used in air return, with hinged removable core without tools, by pressing on the invisible PUSH fasteners. KLIN system allows for the easy access to the diffuser that conform with the required regulations for maintenance of HVAC installations. Constructed from galvanised steel.

**DFZ-R** Four-Way return diffuser.

### Accessories

**PFT** K/8 class EN 779 G3 filter.

**PLK** Upper connection diffuser.

**...-R** Air flow damper in the spigot.

**.../L/** Lateral connection.

**.../AIS/** Thermo-acoustical insulation (supplement **35%**)

### Fixing

1) Suspended at the false ceiling.

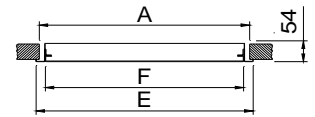
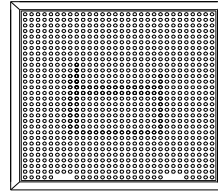
### Finishes

**M9016** Painted in white similar to RAL 9016.

**R9010** Painted in white RAL 9010.

**RAL...** Painted in other RAL colours :To consult.

### DFZ-R

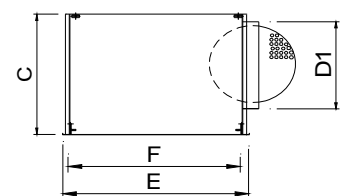
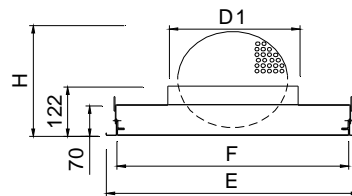


	E	A	F
300	295	269	265
400	395	369	365
500	495	469	465
600	595	569	565
625	620	594	590
675	670	644	640

L x H	E	F
600 x 300	595 x 295	565 x 265
675 x 338	670 x 333	640 x 303
1200 x 300	1195 x 295	1165 x 265
1200 x 600	1195 x 595	1165 x 565
1350 x 338	1345 x 333	1315 x 303
1350 x 675	1345 x 670	1315 x 640

### DFZ-R+PLK...-R

### DFZ-R+PLK /L...-R



H ÷ L (nominal)	E	F	D1	H	C
300 X 300	295 x 295	265 x 265	123	353	280
400 X 400	395 x 395	365 x 365	198	353	320
500 X 500	495 x 495	465 x 465	248	353	370
600 X 600	595 x 595	565 x 565	313	353	435
625 X 625	620 x 620	590 x 590	313	353	435
675 X 675	670 x 670	640 x 640	313	353	435
600 x 300	595 x 295	565 x 265	198	353	320
675 X 338	670 x 333	640 x 303	198	353	320
1200 X 300	1195 x 295	1165 x 265	2/198	353	320
1200 X 600	1195 x 595	1165 x 565	2/313	353	435
1350 x 338	1345 x 333	1315 x 303	2/198	353	320
1350 X 675	1345 x 670	1315 x 640	2/313	353	435

L x H	DFZ-R	DFZ-R-PFT	PLK	PLK-R	PLK/L/	PLK/L/-R	Lwa1 < 35 dB(A) m3/h	Lwa1= 45 dB(A) m3/h
mm	eur	eur	eur	eur	eur	eur		
300	28,73	48,18	28,40	38,80	38,79	48,80	108-180	210
400	32,62	53,57	30,26	43,11	42,66	53,64	230-390	460
500	39,59	62,03	33,79	47,81	45,21	57,17	360-600	720
600	44,96	70,41	39,62	54,80	53,87	67,08	540-900	1080
625	50,58	76,77	40,29	55,50	54,81	68,06	540-900	1080
675	52,46	80,18	42,61	55,83	57,40	70,61	540-900	1080
600x300	37,50	52,88	33,68	46,88	48,66	61,87	270-450	540
675x338	39,83	59,33	36,09	49,30	51,47	64,69	270-450	540
1200x300	55,45	77,22	39,62	54,80	53,87	67,08	540-900	1080
1200x600	72,74	105,06	59,44	72,64	80,79	94,41	1080-1800	2160
1350x338	59,97	87,07	42,61	55,83	57,40	70,61	540-900	1080
1350x675	86,91	127,56	63,91	77,16	86,09	99,30	1080-1800	2160

## air return unit



### Description

Air return unit formed by a grille with G3 class filter, frontally accessible and an isolated plenum with circular connections. Aluminium grilles and plenum box made from galvanized steel. Kit designed to be mounted on a false ceiling.

**ZUR-R** Unit with egg-crate grille. Square netting inclined at 45°.

**ZUR-D** Unit with fixed blades at 45°.

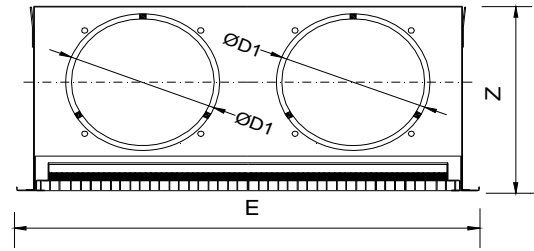
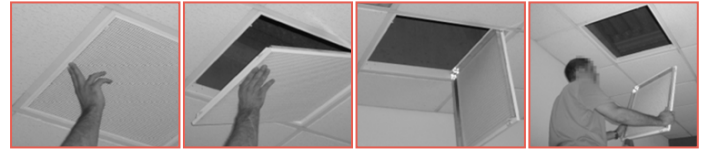
### Fixing

1) Suspended at the false ceiling.

### Finishes

**M9016** Painted in white similar to RAL 9016.

**RAL...** Painted in other RAL colours :To consult.



LxH	E	E'	Z	D1
600x600	595	595	270	198
488x438	483	433	310	198



technical info at  
[www.zoning.eu](http://www.zoning.eu)

L x H mm	ZUR-R eur	Lwa1 < 35 dB(A) m3/h	Lwa1 < 45 dB(A) m3/h
488x438	186,11	885-1950	2595
600x600	216,35	1500-3300	4400

L x H mm	ZUR-D eur	Lwa1 < 35 dB(A) m3/h	Lwa1 < 45 dB(A) m3/h
488x438	178,80	649-1355	1855
600x600	203,99	1100-2300	3145

# ZONiNG

Canigó 3, 08550 Balenyà (Barcelona) ESPAÑA

Tel. 00 34 93 889 80 91

[info@zoning.es](mailto:info@zoning.es) / [www.zoning.es](http://www.zoning.es)

